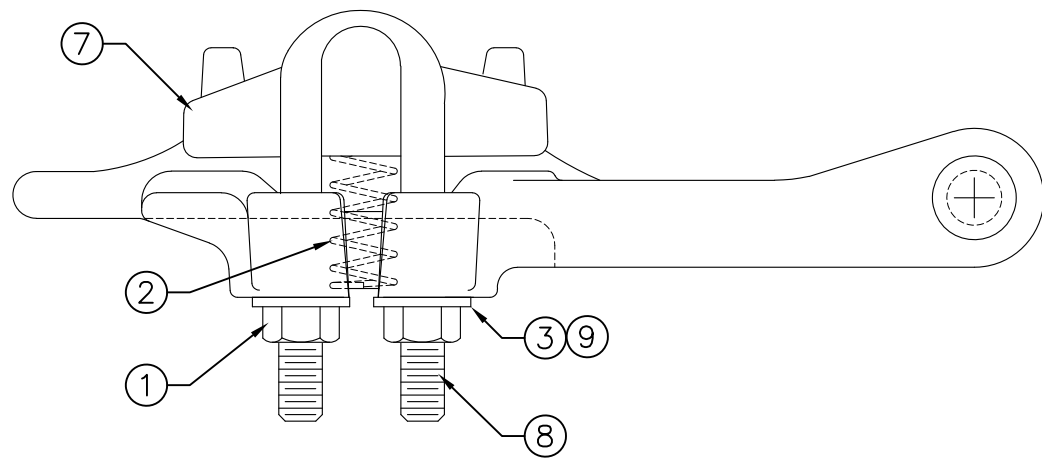
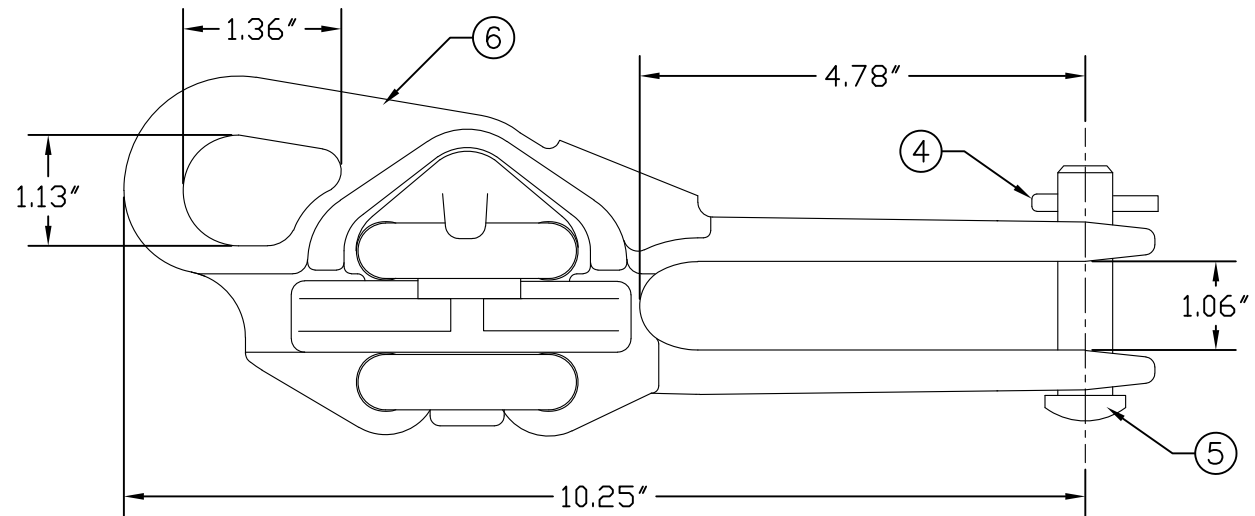
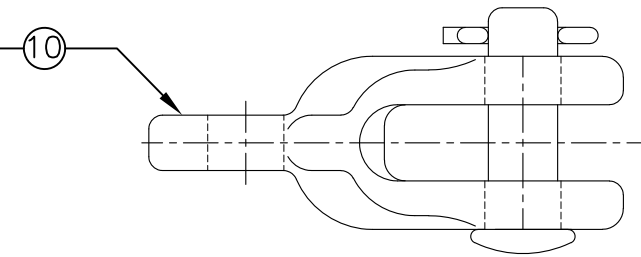


REVISIONS				
NO.	DATE	DESCRIPTION	BY	CKD
1	10/07/20	ADDED HDSO-88-LW OPTION	KMK	KMK

ASSEMBLE CLEVIS EYE TO CLAMP BODY FOR HDSO-88C



ITEM NO.	PART NO.	CAT. NO.	DESCRIPTION	QUANTITY			
				A	B	C	D
1	P56138	H-0400-04-W	1/2"-13 HEX NUT FIN	4	4	4	
2	P56230	H-0470-06	0.5" x 2.75" SPRING	1	1	1	
3	P56294	H-0500-04	1/2" FLATWASHER	4	4	4	
4	P61134	M-111-3	LONG COTTER PIN	1	1	1	
5	P61165	H-0315-04	5/8" x 2-9/16" CLEVIS PIN	1	1	1	
6	P62157	*HDSO-88-B	HDSO-88 BODY	1	1	1	
7	P62159	*HDSO-88-K	HDSO-88 KEEPER	1	1	1	
8	P62681	H-0201-32	1/2" STEEL U-BOLT	2	2	2	
9	P56399	H-0520-04	1/2" LOCKWASHER	-	-	1	
10	F327217	SCE-55-875	STRAIGHT CLEVIS EYE	-	1	-	

ASSEMBLY NUMBER	REF. NO.
HDSO-88	A
HDSO-88C	B
HDSO-88LW	C
- - - - -	D

NOTES:

1. MATERIAL - BODY AND KEEPER:  
A356-T6 ALUMINUM ALLOY

HARDWARE:  
STEEL, HOT DIP GALVANIZED PER  
ASTM-A153

COTTER PIN AND COMP. SPRING:  
STAINLESS STEEL

2. ULTIMATE STRENGTH - BODY: 10,000 LBS.  
EYE: 6,000 LBS.

3. CLAMPING RANGE - 0.25" TO 0.88"



HOT LINE DEAD END CLAMP  
HDSO-88, HDSO-88C

This information is confidential and is the property of Maclean Power Systems. It may not be made public or reproduced except that the Customer may make copies for use solely in installation, maintenance, and operation of products supplied by Maclean Power Systems.

ENG. REF.

DATE: 12/08/2011	SCALE: NONE	NO.	BC8531-1	R/1	SH. 1
DWN. BY: CDR	CKD. BY:	APR. BY:			OF 1